

ROYAL SOCIETY
OF **CHEMISTRY**
at Burlington House

ROYAL SOC. OF CHEMISTRY



Visitors Must Park
Bicycles In The
Cycle Hoops

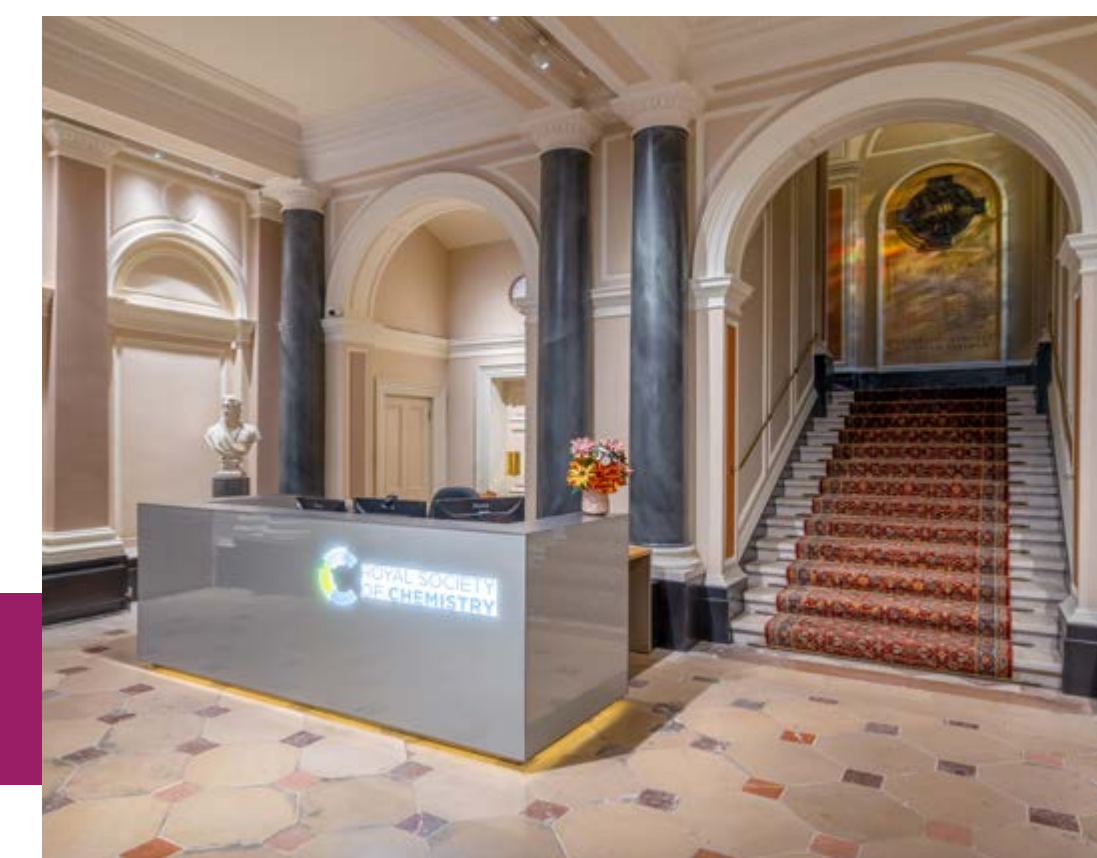
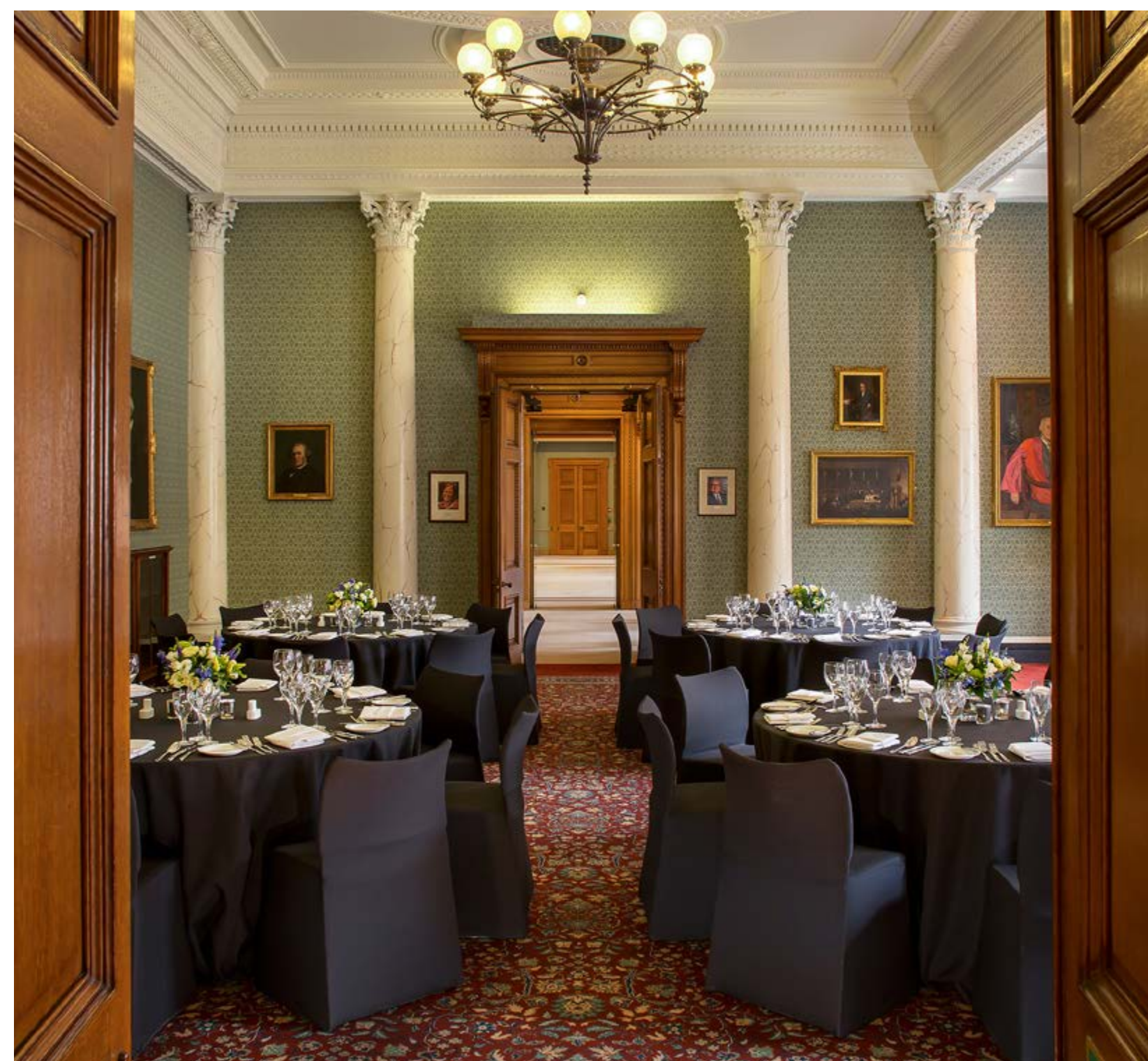
An iconic venue

Located within the backdrop of London's iconic West End, the Royal Society of Chemistry at Burlington House is a prestigious event space full of discovery, offering stories around every corner.

As the home of the Royal Society of Chemistry since 1857, we're a venue that combines our rich heritage with vibrant spirit and contemporary facilities, providing you with the perfect formula for an unforgettable occasion.

We invite all manner of events and are easily accessible and welcoming to all. We offer a bespoke, personal service that inspires impactful and memorable events, all delivered with authenticity and creativity.

Plus, as a not-for-profit organisation, we invest any surplus into supporting the chemical science community. This means any event you hold at Burlington House also contributes to the future of research.



Ready to take a closer look?



The rooms

The Royal Society of Chemistry at Burlington House is home to six spectacular event spaces, ready to unfold your very own story.

From intimate rooms to a grand library, you can discover the perfect combination of vibrancy and spectacle, making sure your event leaves a striking impression on all attending.

Available individually or hireable in conjunction with one another, our rooms can be used to create the ideal event space. Plus, with natural daylight, air conditioning and specialised IT and AV capabilities, our rooms are fully equipped for all your needs.



Offering an elegant and iconic space that is perfect for exhibitions, conferences and receptions



Science Room

Science Room

Scientific heritage meets contemporary design in the Science Room, offering an elegant and iconic space that is perfect for exhibitions, conferences and receptions.

Our built-in audio equipment and large projector on the back wall provide a backdrop for presentations that will educate and inspire those attending.

The effective soundproofing also means there will be no disruptions during your important event.



CAPACITY

120



KEY FEATURES

- built-in audio-visual facilities
- ability to be hired with the Fish Room for extra capacity
- large open plan for added flexibility



PERFECT FOR

- Exhibitions, conferences, receptions, photography and film projects





A small syndicate space for atmospheric private events and meetings with a contemporary touch



Fish Room

Fish Room

Decorative pillars line the Fish Room – a small syndicate space with an atmospheric yet contemporary touch.

This versatile meeting space features stunning views of the courtyard. The room's high ceilings and large windows also offer a grand location for discussion and networking.



CAPACITY

60



KEY FEATURES

- atmospheric yet contemporary
- stunning views of the courtyard
- connects to the Science Room should more space be required



PERFECT FOR

Meetings and private occasions, dedicated catering/reception space for events in the Science Room





Our prestigious library and landmark event space emanates spectacular grandeur



The Library

The Library

For a historical touch that emanates spectacular grandeur, our prestigious library and landmark event space can be used for both corporate events and private occasions.

Your guests will be surrounded by stories of discovery with a backdrop of delicate wooden features, literature throughout the ages and Italianate renaissance architecture.

This event space holds education and community at its core.



CAPACITY

120



KEY FEATURES

- striking historical architecture
- built-in audio-visual facilities
- permanent screens for hybrid events



PERFECT FOR

- Lectures, fine dining, AGMs, weddings, filming, book launches





A characterful choice for receptions and meetings, radiating both charm and class



Council Room

Council Room

Filled with character and boasting memorable antique artwork from our prized collection, the Council Room is the perfect choice for those looking for a contemporary event space that radiates both charm and class.

Flexible configuration and a striking 80-inch HD screen give you the ability to transform the space into your ideal storytelling platform.



CAPACITY

80



KEY FEATURES

- flexible capacity for a range of event types
- a collection of historic artwork
- large screens suitable for giving presentations



PERFECT FOR

Meetings, receptions and workshops





The nostalgia of antique books lining the walls sets the scene for a magical, intimate ambience



Priestley Room

Priestley Room

Nestled away from the activity of the courtyard, the Priestley Room offers a more intimate and quieter environment for board meetings, private dining and business lunches.

The nostalgia of antique books lining the walls sets the scene for a magical ambience that is just waiting for further discoveries to be made, skills to be learned and ideas to be shared.



CAPACITY

20



KEY FEATURES

- a quiet environment for intimate meetings
- combination of history and modernity
- hot food counter at the back of the room



PERFECT FOR

- Board meetings, intimate dining and business lunches





Inspire creativity with the rich knowledge of the Hinshelwood Room



Hinshelwood Room

Hinshelwood Room

Knowledge is woven into every crevice in the Hinshelwood Room, making this space home to many quality experiences for your delegates to discover.

The event space inspires creativity from the moment you walk in, making it ideal for breakout sessions and small group discussions.



CAPACITY

12



KEY FEATURES

- unique backdrop of scientific history
- permanent screens suitable for hybrid meetings
- alternative space for period-themed celebrations



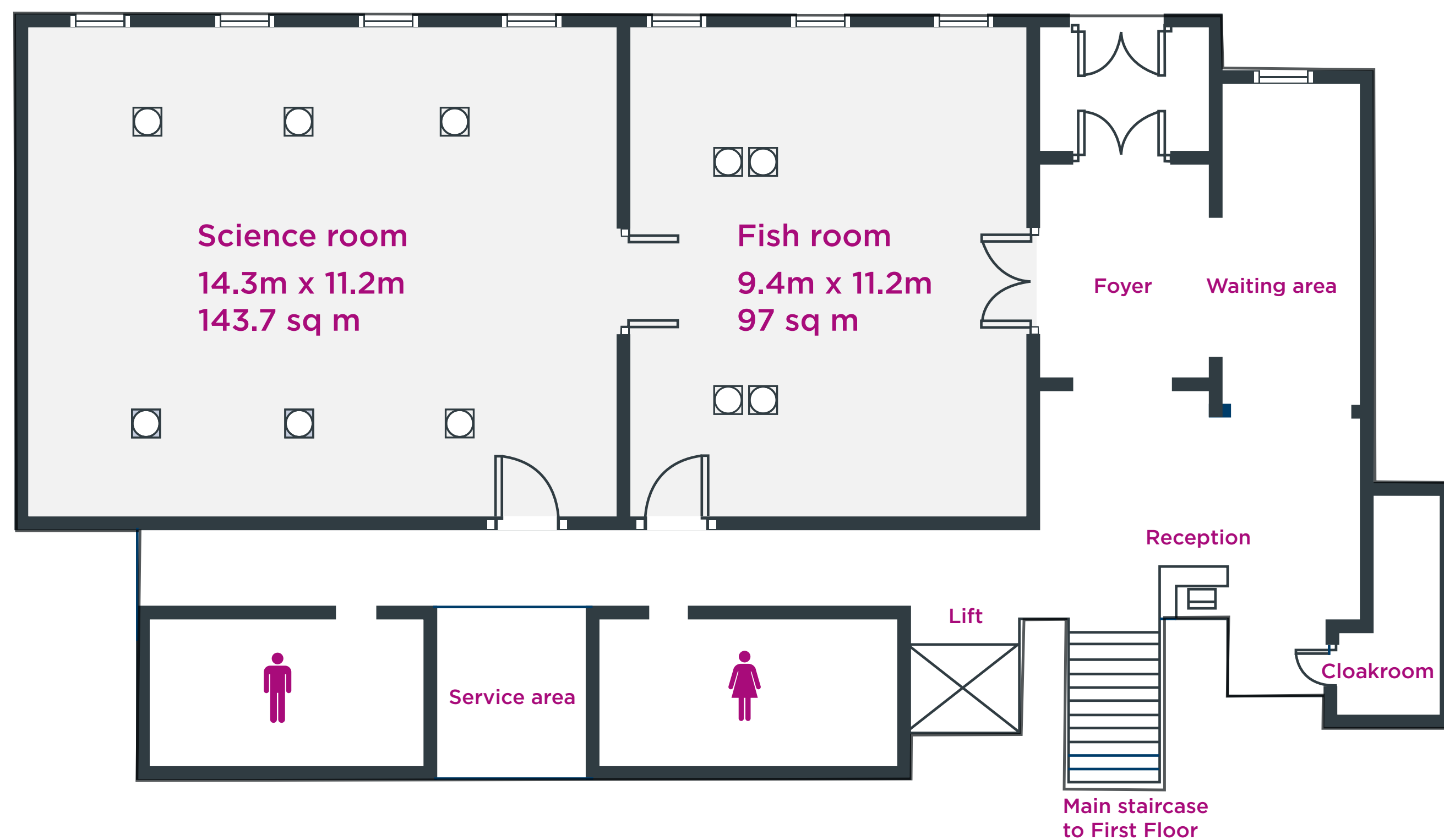
PERFECT FOR

- Group discussion, break-out sessions and meetings

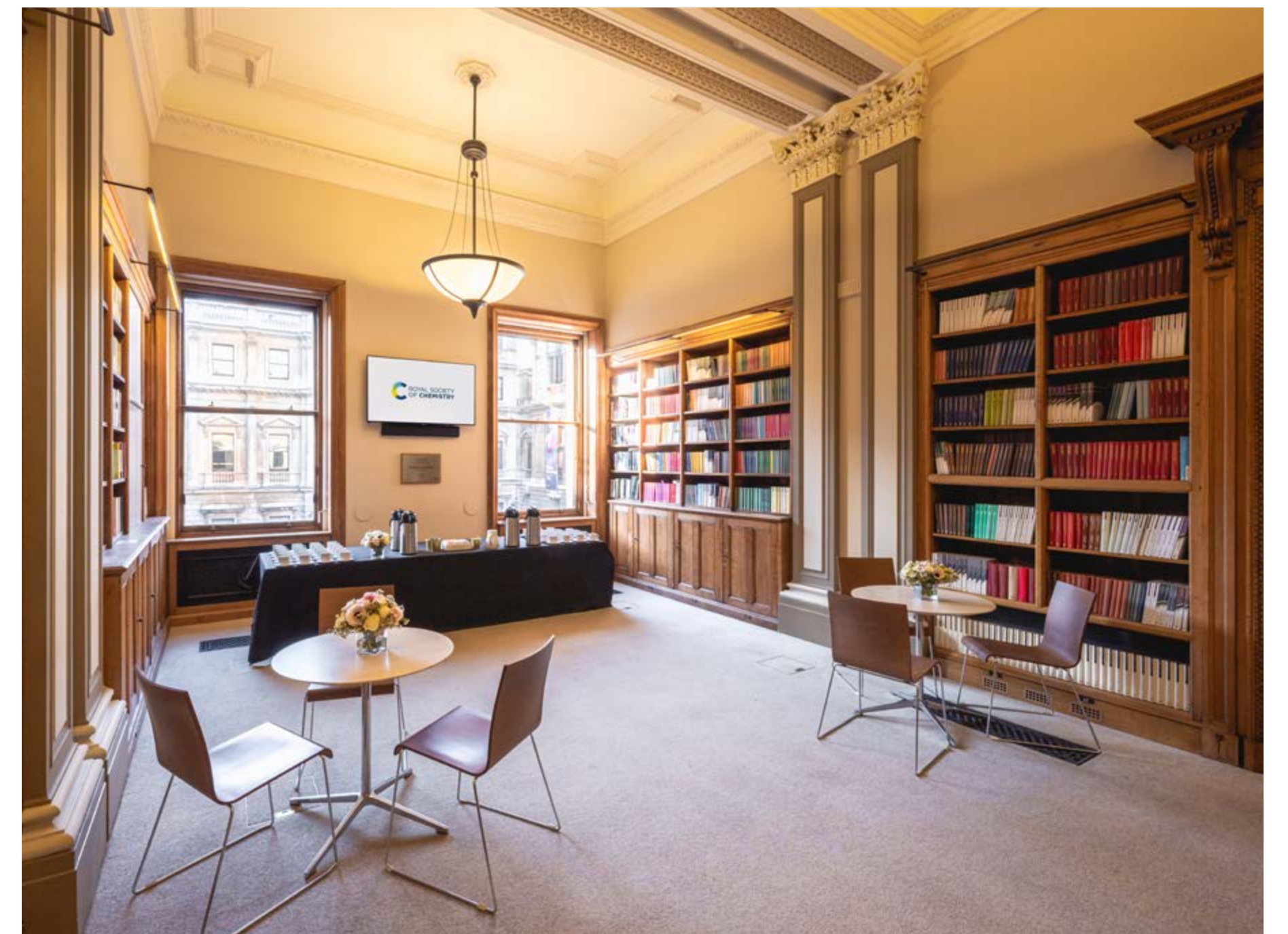
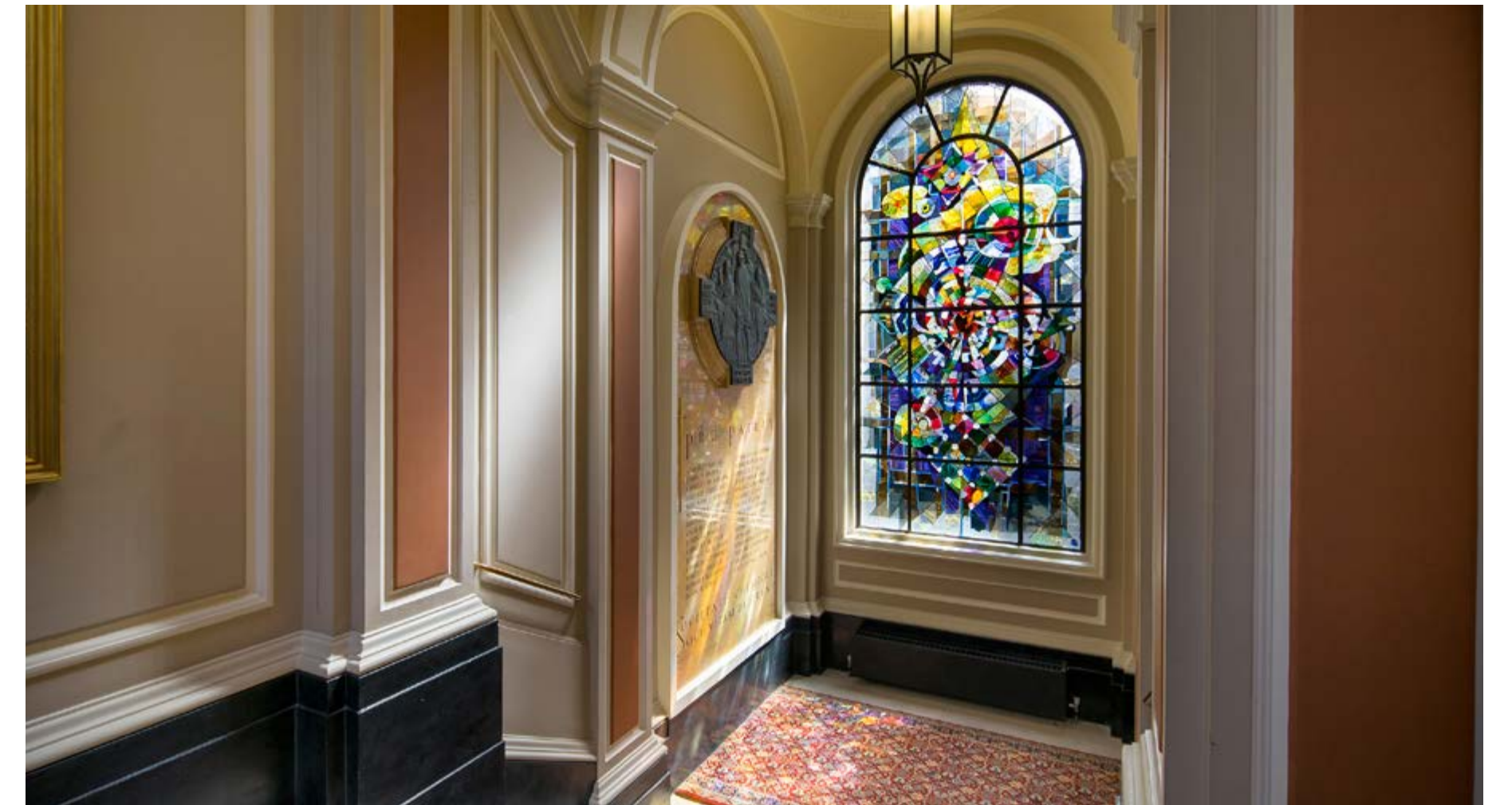
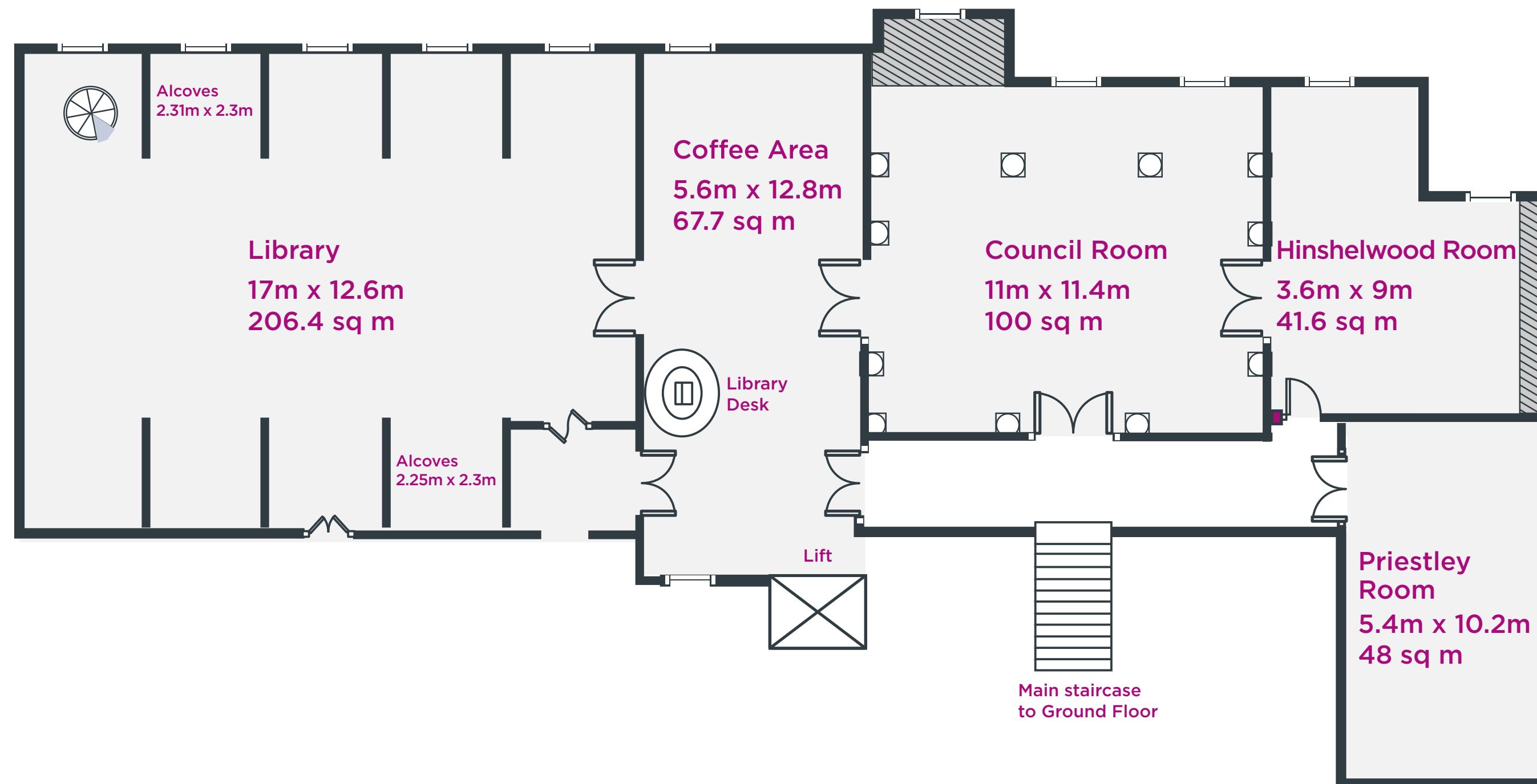




First floor



Second floor





Technical equipment

IN THE ROOMS

- superfast wifi and internet access
- mobile and fixed presentation facilities
- built-in PA systems (Library and Science Room)

PART OF YOUR HIRE

- poster boards
- laptops
- flip charts

ON REQUEST

- poster boards
- laptops
- flip charts

ON REQUEST

- hybrid facilities
- live streaming
- recording facilities
- skype and online meeting software

Technical support is available on request at an extra cost.

Room capacity

| ROOM | CAPACITY | BOARDROOM | LECTURE STYLE | CABARET | FORMAL DINING | CLASSROOM | RECEPTION |
|------------|----------|-----------|---------------|---------|---------------|-----------|-----------|
| SCIENCE | | 30-35 | 70-120 | 36-64 | 60-100 | 20-48 | 80-160 |
| FISH | | 20-25 | 50-65 | 20-32 | 30-40 | 12-16 | 50-80 |
| LIBRARY | | 30-45 | 70-120 | 36-64 | 60-100 | 20-48 | 80-160 |
| COUNCIL | | 20-27 | 50-70 | 20-40 | 50-60 | 16-20 | 50-100 |
| PRIESTLEY | | 12-20 | 30-36 | 12-16 | 16-20 | 12-16 | 20-40 |
| HINSELWOOD | | 6-12 | 12-25 | N/A | N/A | N/A | 12-25 |





Food and drink

The vibrancy of our venue is matched by our imaginative food and catering solutions. Our award-winning in-house caterers, Houston & Hawkes encompass the authenticity we strive for in every aspect of events, with menu variety to tantalise the tastebuds.

We make corporate catering more than just a necessary accompaniment to your event, but a truly memorable experience. The team of culinary experts excel in the innovative touches that are underpinned by a commitment to sustainability.

Sourced locally from some of the best suppliers in the business, every ingredient is consciously considered. Food miles are kept to a minimum, reducing travel and ensuring freshness.

Talk to the team about our latest seasonal menus, or a truly bespoke concoction to suit your unique event.





Services

Our team

Our event offerings would be nothing without our dedicated and professional team that helps make every event extra special. That's because our team works with you from start to finish, helping to plan and advise on layout and logistical features. During the day, we will welcome your guests and create an atmosphere that leaves them feeling treasured, inspired and connected all day long.

Sundries

Event planning can be difficult, which is why part of our service ensures you don't have to spend time searching for everything separately for your event. Our team can work with you and our expert suppliers to source the sundries you need for that added magic.

Our suppliers can help you source:

- banqueting chairs
- menu cards
- special order equipment
- a choice of linen colours
- badges for your delegates
- place cards and seating plans
- centrepieces and floral arrangements
- lighting and visual effects
- music and entertainment



Packages and pricing

Fully tailored options

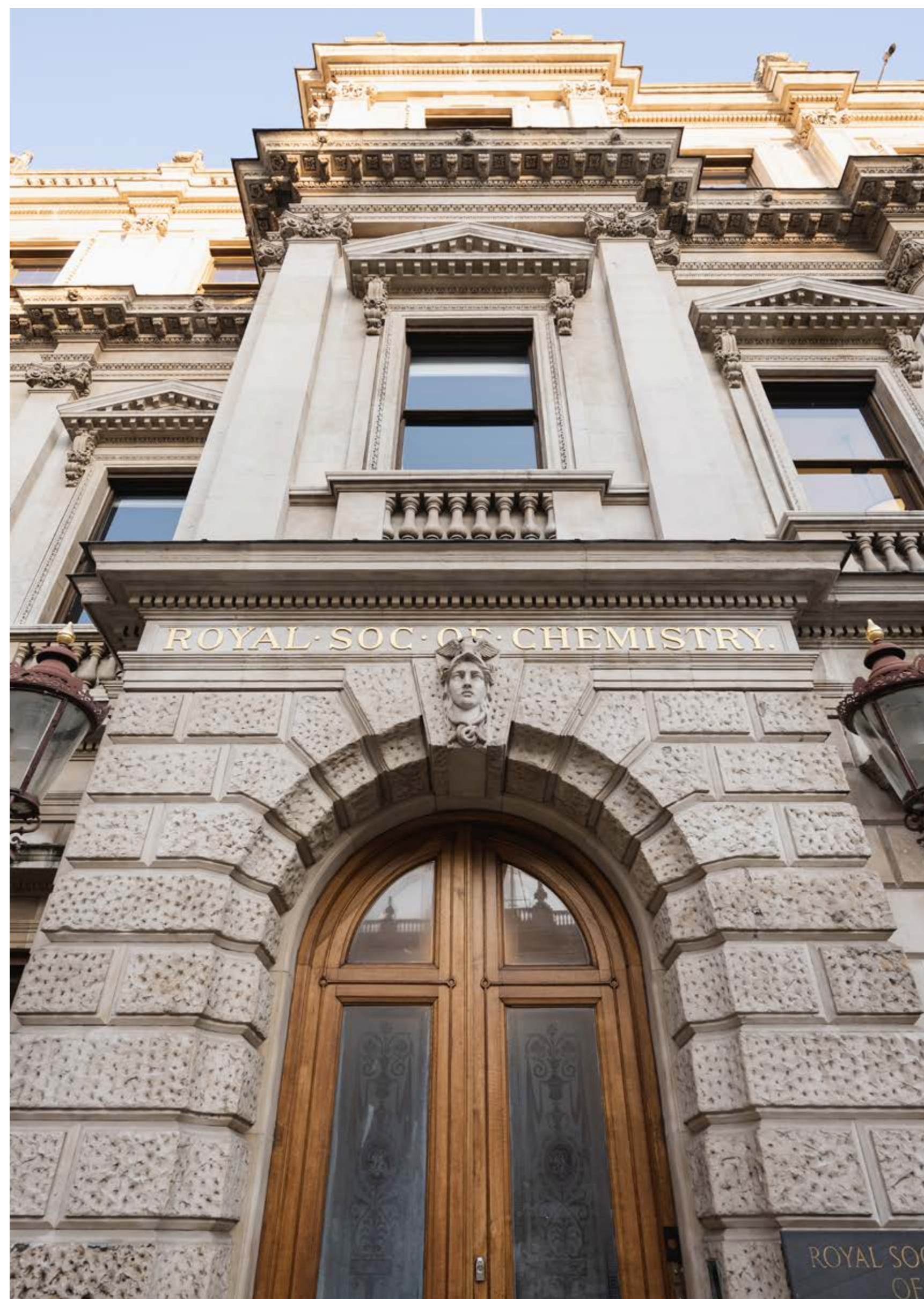
We can create events as unique as your requirements - our expert event team can take care of every aspect of your occasion, from advising on room choice and technical setup to sourcing the tiny details that make an event stand out.

Start with an enquiry - end up with your perfect day.

Day delegate rates

If you are looking to host a full day event, our starter packages make planning straightforward. Each package combines room hire, catering and core AV facilities, with add-ons and special requests available to add that extra something to your day. Day rates can be tailored to suit your conference size and schedule.

[!\[\]\(1cc6b6b27654a411b0e71d314f64dde2_img.jpg\) Download day rate examples](#)



A big vision for the future

The Royal Society of Chemistry is an international organisation, bringing together chemical scientists around the world to share ideas that help bring about real change in our society.

With over 175 years of heritage, we make our profits work hard so that every part of our organisation shapes the future of the chemical sciences – for the benefit of science and humanity.

How your event helps

Every event held at Burlington House helps fund the Royal Society of Chemistry to promote, support and celebrate chemistry on a global scale.

Your funding might help to...

Make the next big discovery

We help chemical scientists fulfil their potential. We provide specialist advice and support that helps groundbreaking ideas become reality.

Inspire the next generation

Chemistry skills can open up a vast range of fulfilling careers. We help young people see the part they can play in the future of the chemical sciences, and we improve chemistry education.

Shape new science policy

As a source of reliable knowledge, we provide advice on regulations and procedures and work with policymakers to make sure chemistry gets the support it needs from governments.

Tackle the world's challenges

Chemists all over the world are dedicating their careers to taking on disease, climate change and hunger. We support their efforts by helping

them make connections and promote their achievements.

Connect people with chemistry

We organise and support a broad range of activities to show that everyone has a role in the future of chemistry.

Visit us

Burlington House is on the north side of Piccadilly, opposite Fortnum and Mason and not far from The Ritz. After entering the gates, you will find the Royal Society of Chemistry at the far right of the courtyard. Disabled access is available.



On the London Underground

The nearest tube stations are Green Park and Piccadilly Circus.



By bus

Bus numbers 14, 19, 22 and 38 all stop near to Burlington House.

Contact us



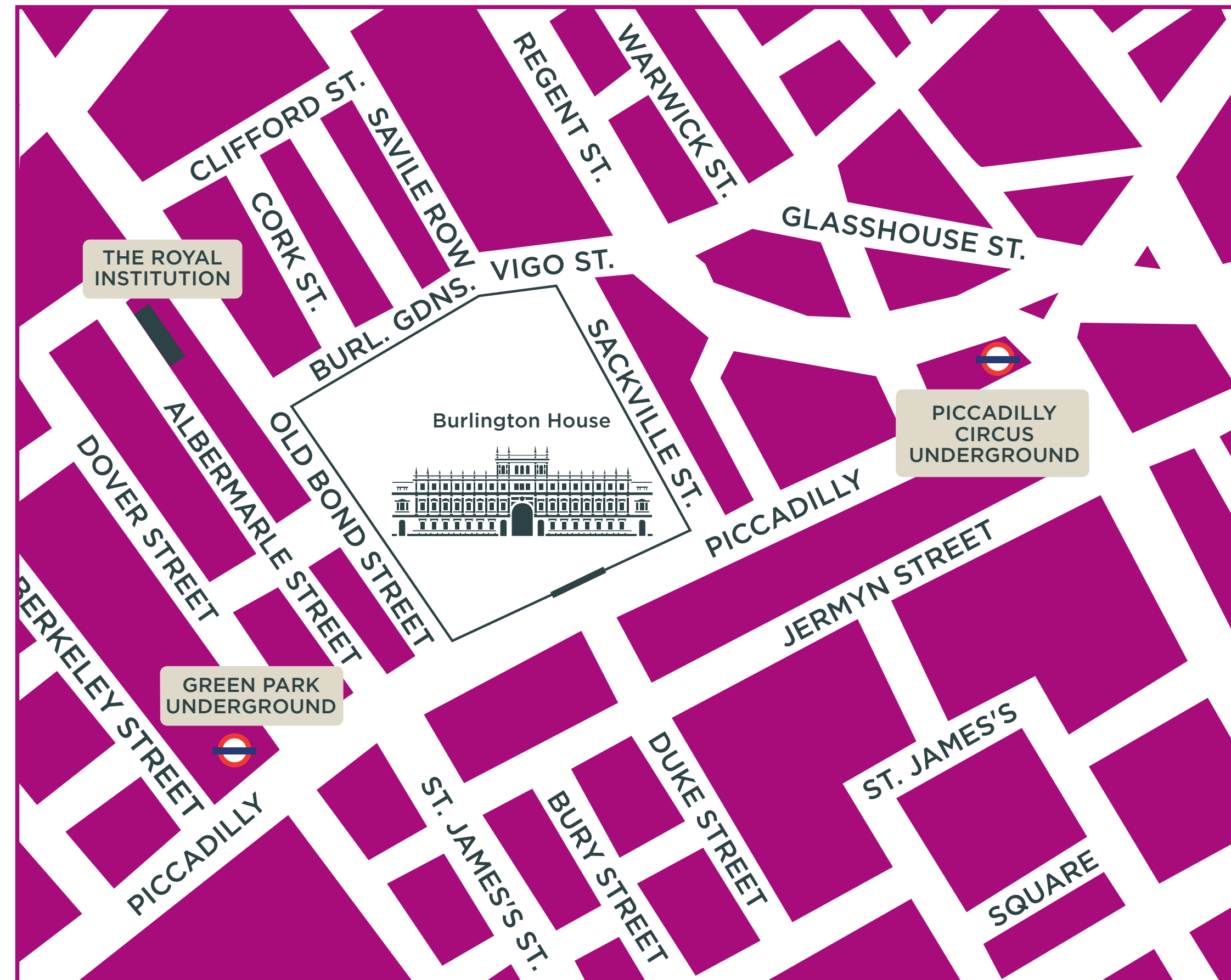
Burlington House
Piccadilly, London
W1J 0BA UK



+44 (0) 207 440 3352
venuehire@rsc.org



rsc.li/venue-hire





Burlington House
Piccadilly, London W1J 0BA UK

+44 (0) 207 440 3352
venuehire@rsc.org

[rsc.li/venue-hire](https://www.rsc.li/venue-hire)